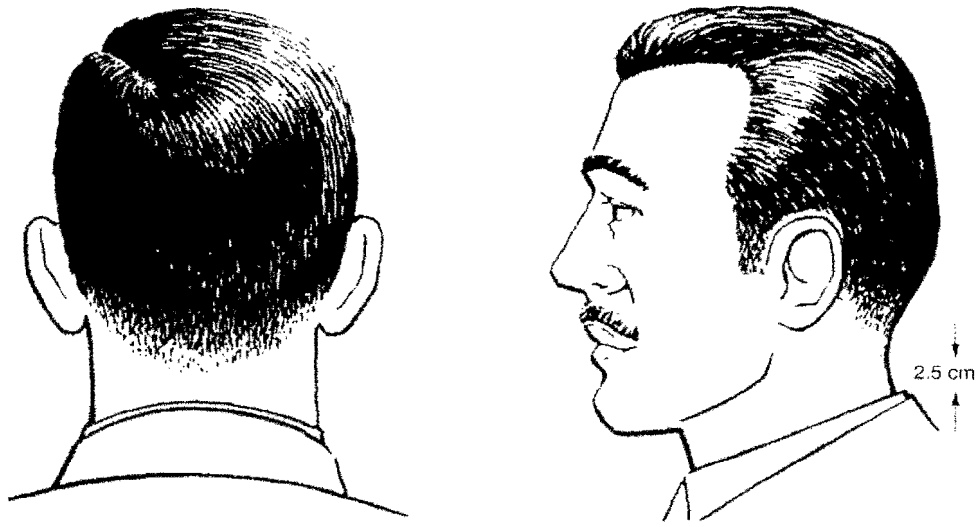
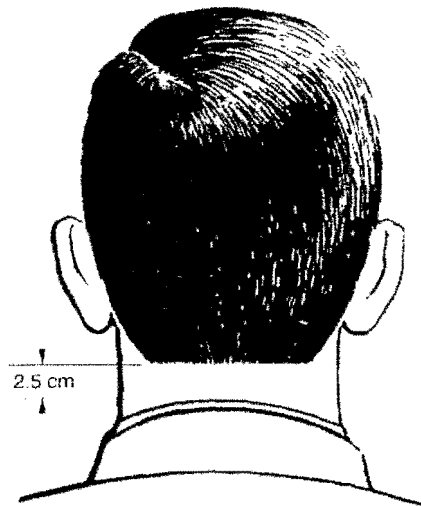


PERSONAL APPEARANCE



TAPER TRIMMED HAIRCUT CONVENTIONAL



TAPER TRIM HAIRCUT - STRAIGHT BACK APPEARANCE

Figure 2-2-A – Male Personal Appearance

PERSONAL APPEARANCE

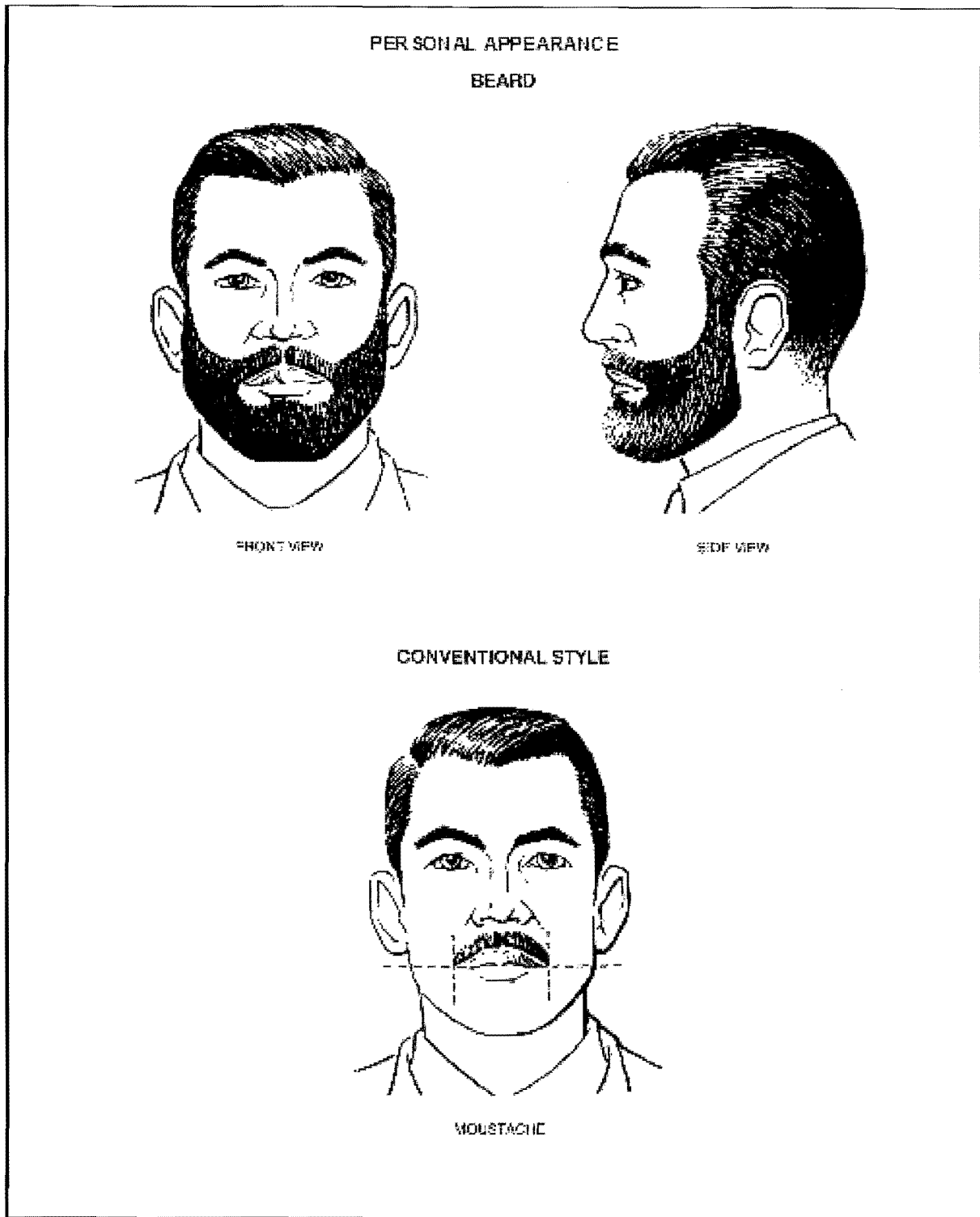
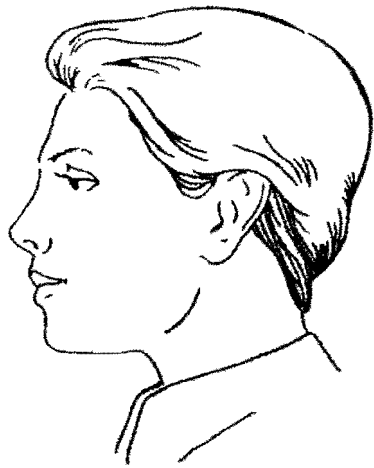
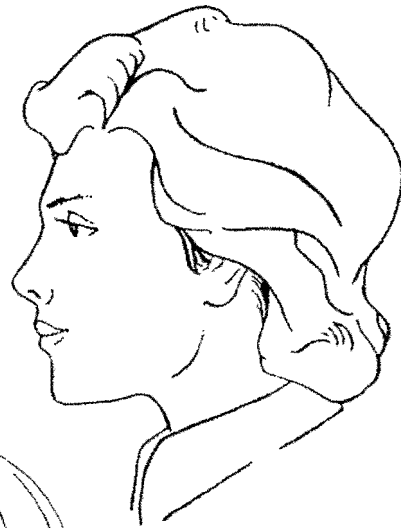


Figure 2-2-B – Male Personal Appearance

PERSONAL APPEARANCE



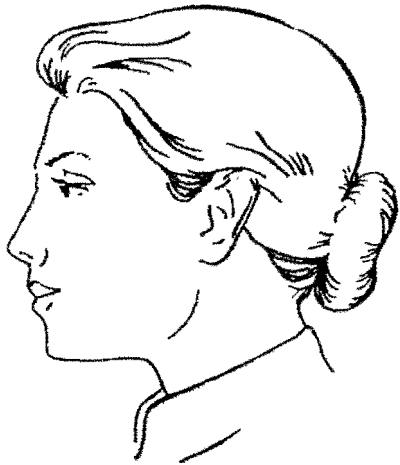
SHORT HAIR STYLE



CURLED HAIR STYLE



HIJAB NO HEADRESS



STRAIGHT HAIR STYLE WITH BUN



ONE STUD EAR-RING MAY BE WORN
CENTRED IN EACH EAR LOBE

Figure 2-2-C – Female Personal Appearance

PERSONAL APPEARANCE

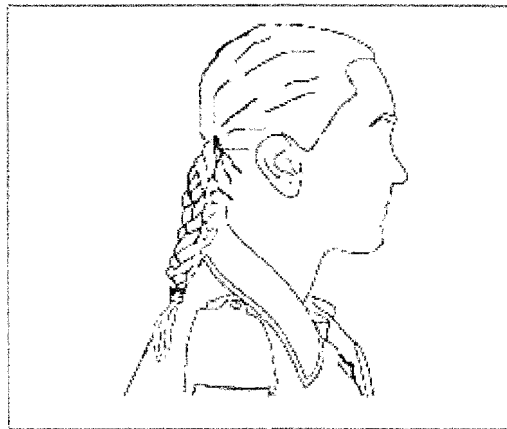
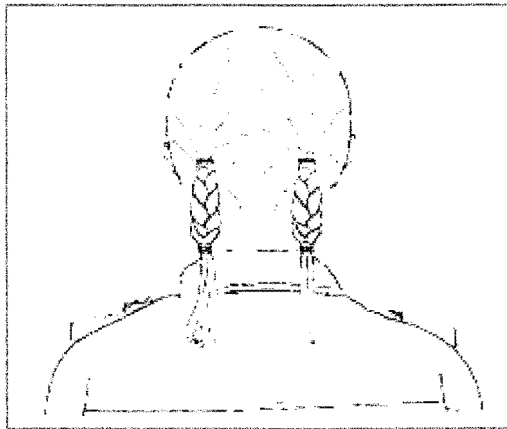
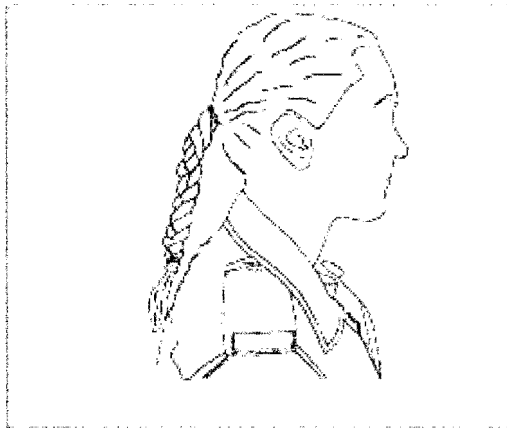
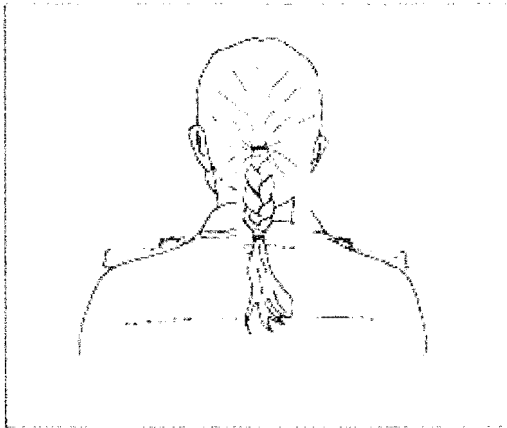
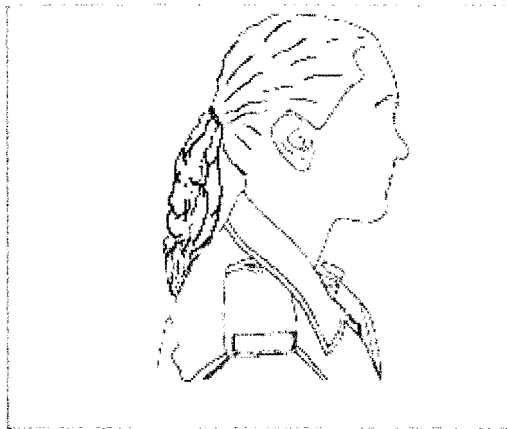
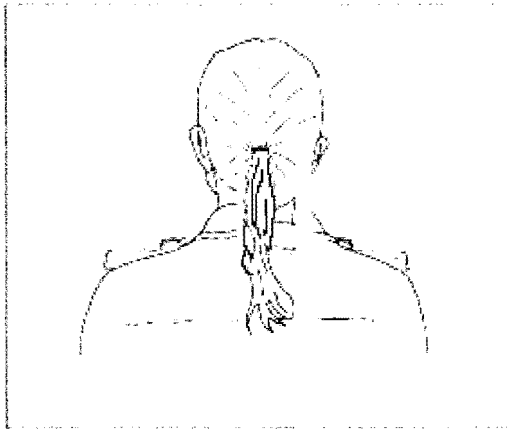


Figure 2-2-D – Female Personal Appearance

PERSONAL APPEARANCE

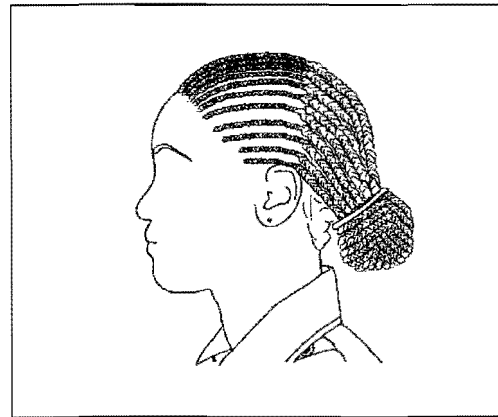
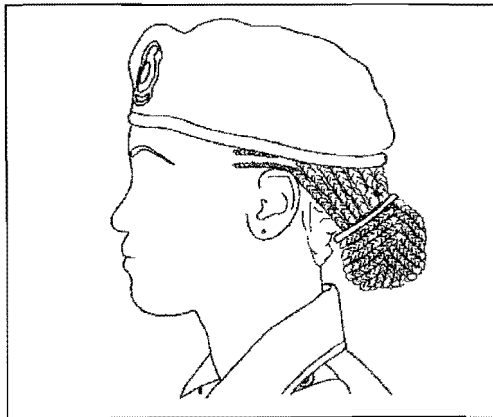
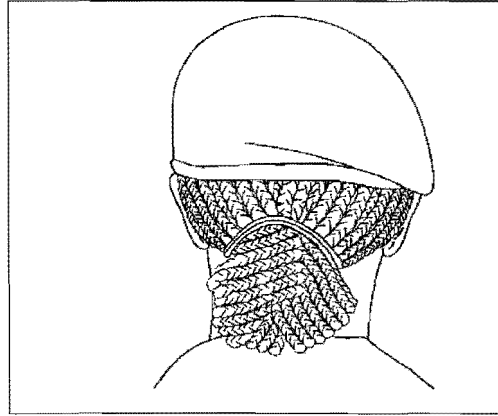
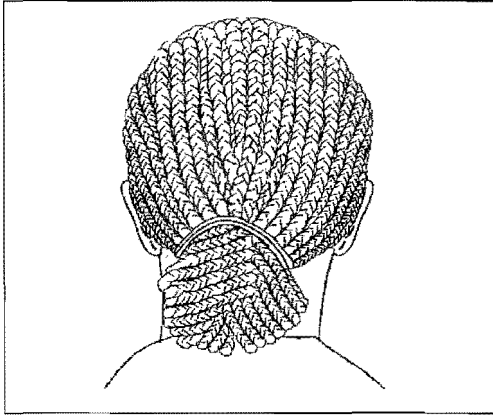


Figure 2-2-E – Female Personal Appearance

PERSONAL APPEARANCE







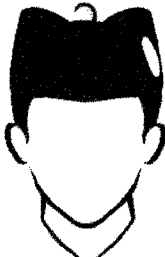





 <p>Seaman's Cap - Sea</p>	 <p>Beret - Common</p>	 <p>Wedge - Air</p>
 <p>Ball Cap - Sea</p>	 <p>Toque - Common</p>	 <p>Wide-Brimmed Tan Summer Hat Common</p>
 <p>Glengarry - Plain</p>	 <p>Glengarry - Diced</p>	 <p>Balmoral</p>
 <p>Regimental colours image to be created</p> <p>Turban - Common</p>	 <p>Hijab - Common</p>	 <p>Patka - Common</p>

Figure 2-2-F – Headdress